

Narrowboats LTD

WINCHAM BOAT SALES

THE ABODE

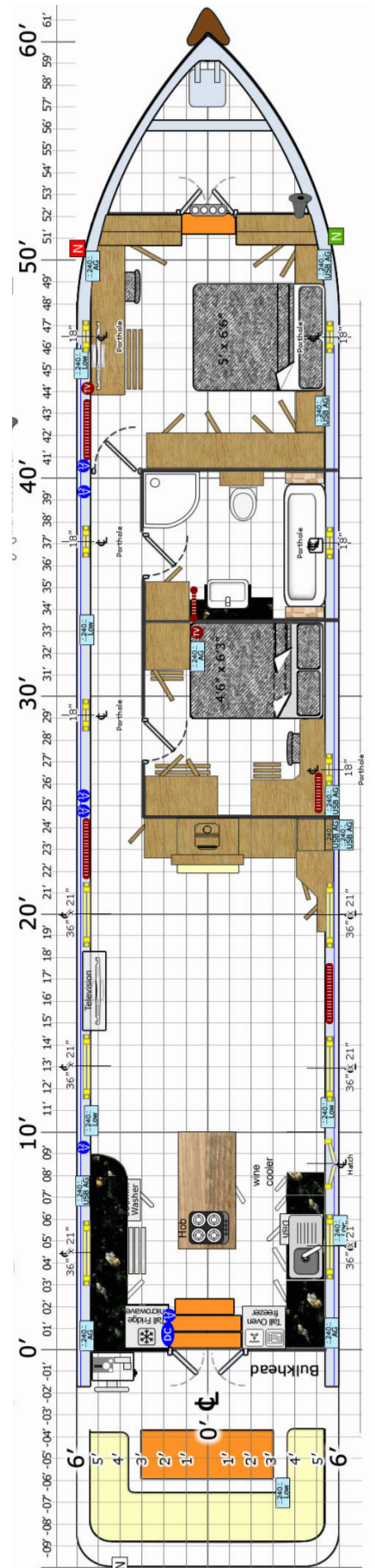
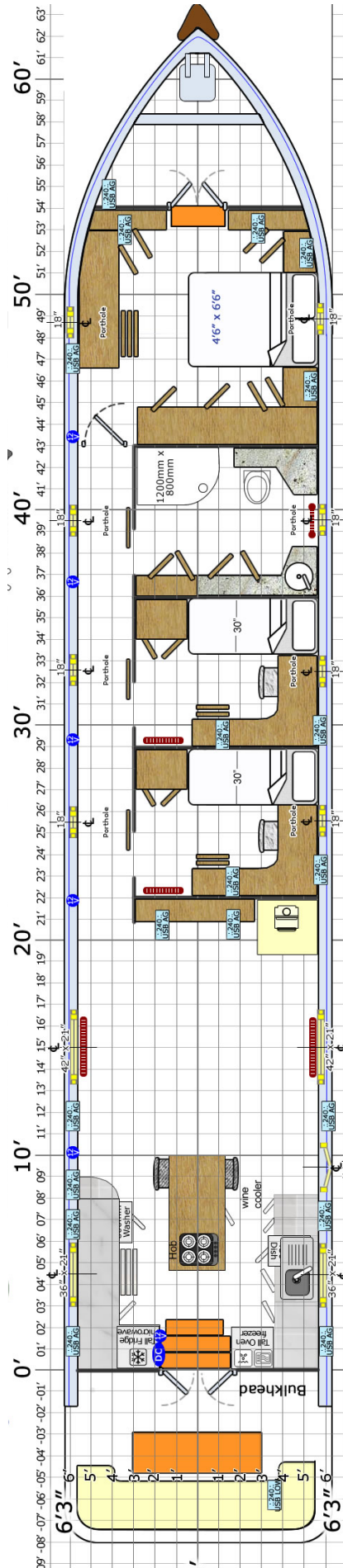
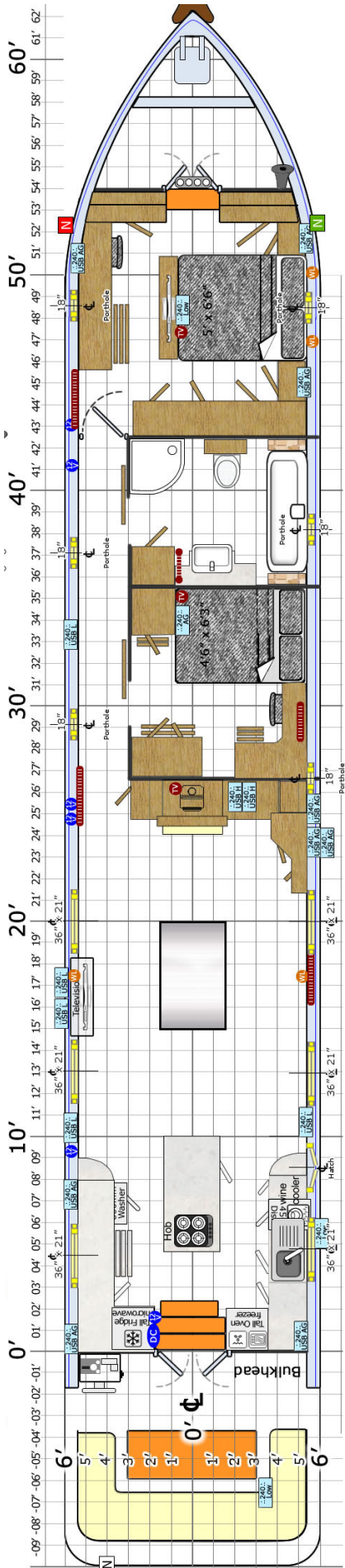


www.narrowboatsltd.co.uk

Narrowboats Ltd, Wincham Wharf, 220 Manchester Road, Northwich. Cheshire, CW9 7NT
Telephone: 01606 47078 Email: info@narrowboatsltd.co.uk

Abode Layout

These plans feature both the standard specification & optional extras



Specification

Included in the standard build

Hull

LOA: 65' or 70' as standard, other lengths available on request.

Beam: 12'6 or 12'3

Plating: 10/6/5/5

Stern: Euro Cruiser with Upholstery & Wheel Steering (Tiller Option Available)

Water Tank: Stainless Steel Approx. 525 Ltrs (When no Bow Thruster is installed)

Diesel Tank: Approx. 320Ltrs

Hull Coating: 2 Pack Epoxy

Cabin Paint: Symphony Coatings, 2 Coats Primer, 2 Coats Undercoat, 3 x Topcoat

Integrated handrail, mooring 'T' studs, Pole & Plank Holder and fender eyes.

Insulation: Sprayfoam.

Engine & Gearbox

Canaline 60hp 4 cylinder diesel engine with twin alternators and PRM250 gearbox. Engine control panel with tachometer, water temperature, oil pressure and battery warning lights and multifunction LED display.

Heating & Hot Water System

In addition to the solid fuel stove in the saloon there is a Webasto diesel fired central heating system running three radiators and a heated towel rail as well as a 13 gallon calorifier for hot water. The twin coil calorifier is also connected to the engine circuit providing heat for hot water when running. Additionally a 1kw immersion heater is fitted to give hot water via shore power.

Electrics

The 240V system on board simply plugs in to the shore line providing power to the brushed stainless steel double sockets throughout the boat. When cruising, a Sterling 2500/70 pure sine wave inverter/charger ensures you are never without power.

4 x 110A domestic batteries, which are charged by a dedicated alternator, provide 12v power through the high quality, dedicated distribution panel which carries individual breakers for all the appliances, as well as voltage and amperage readouts.

There are also dedicated batteries for engine starting and the 95KGF Vetus bow thruster.

Interior Finish

The interior lining is of oak faced ply throughout with matching hardwood trims, complimented by tongue & groove effect ceiling, plus painted panels above the gunwale. If required for an additional charge the ceiling can be upgraded to the popular Off White effect. Interior woodwork is finished in a high-performance, water based, low VOC, clear acrylic which is extremely hardwearing, has minimal impact on the natural colour of the timber and is kinder to the environment.

Exterior Finish

Layers of high-performance primers and undercoats are applied to the craft before being painstakingly coach-painted in beautiful high-gloss or matt marine enamel. For areas such as deck, roofs and gunwales non slip coating is applied.

Rear Deck Area

The square cruiser stern is the perfect area for socialising whilst out cruising or when moored up. The wraparound rear seating area provides plenty of storage and comes with weatherproof, upholstered, removable cushions. The boat can be steered by either the hydraulic wheel steering or conventional tiller. Further seating/storage is provided alongside the steering position. Plenty of options are available to add your personal touch to this area too.

Galley

As well as boasting generous amounts of storage and granite work surfaces, the galley on the Abode is packed with all the modern appliances you need including a large integral fridge, freezer, slimline wine cooler, oven, microwave and a washer dryer. A central island with a hardwood work surface and breakfast bar features a 5 burner hob with extractor above.

Saloon

The attractive saloon area is the perfect space to make your own with freestanding furniture. A state-of-the-art 42" flat screen TV & DVD is built in to an under-gunwale unit with options available for a satellite system too. A fireplace with solid fuel stove set on a tiled hearth is centrally located on the forward bulkhead. Additional atmospheric lighting is provided by picture lights.

Bedroom Two / Study

Amaze your guest with just how comfortable on-board living can be. This generous room offers a double bed, two wardrobes and a desk/dressing table with picture light above. If required this room can be reconfigured to offer one or two single berths.

Bathroom

The Abodes spacious, beautiful and practical bathroom features a large corner shower unit, electric macerator pump out, full size bath, hand basin and vanity unit. This modern, luxury bathroom afloat is further enhanced with glass panelled hardwood doors and granite work surfaces.

Master Bedroom

The spacious master bedroom offers generous amounts of storage with three mirrored, full height wardrobes and fitted drawers and cupboards. Glazed doors leading on to the bow deck and large windows help create a light, airy ambience with wallpapered panels completing the striking, interior scheme. A king size bed is standard and for extra luxury a 32" flat screen TV rises smoothly out of the footboard for night-time viewing.

